

Water System Overview



1942
DEKALB
COUNTY
WATER
WORKS



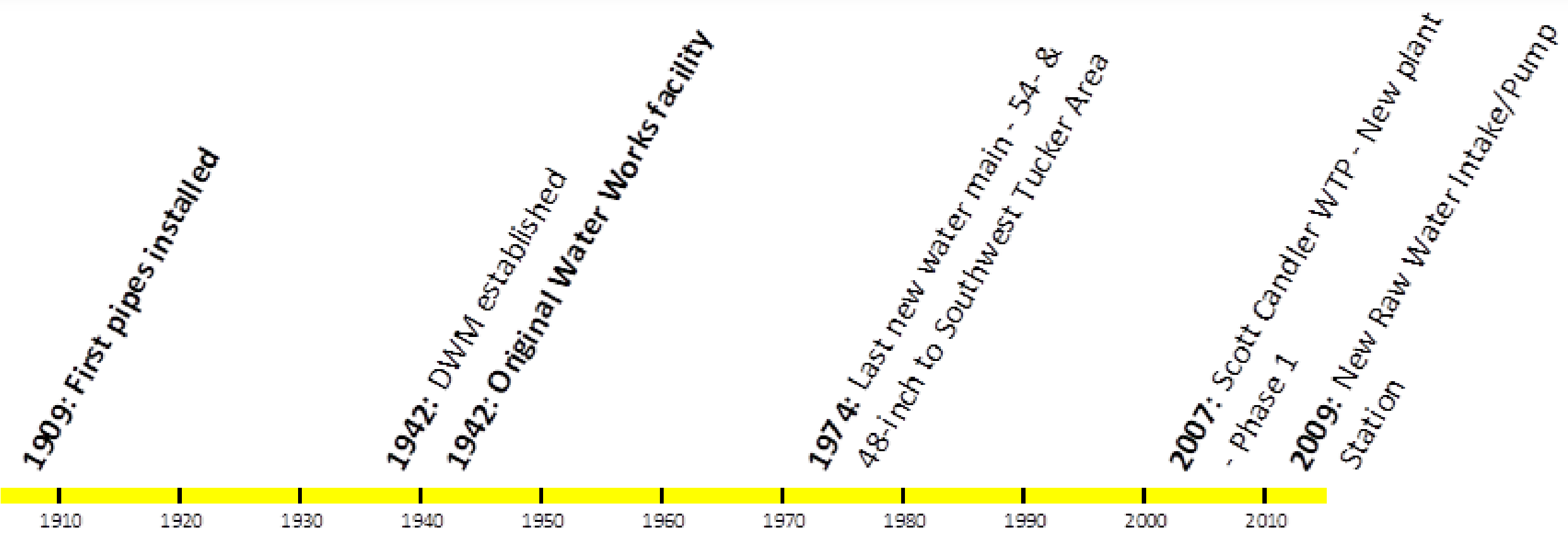
Scott Candler Plant - main building south entrance



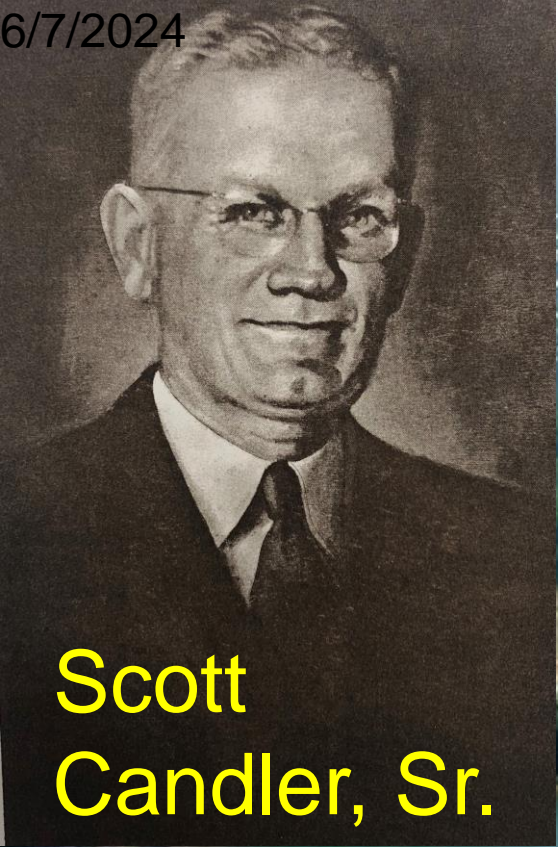
Significant Achievements since 2017 - \$520M invested in the Water System includes:

1. Water Treatment Plant improvements (high services pump station header and transfer pumps, steel ground storage tank, ozone generators)
2. Developed and completed the first master plan with recommendations regarding capital improvements through 2050
3. 91 miles of water mains rehabilitated or upsized
4. Total of 149,084 iPERL and out-of-life cycle meters replaced as part of the New Day Project; increased staff at UCO by 50 individuals, new billing system
5. Successfully converted over 87% of the meter monitoring system to Advanced Metering Infrastructure (AMI) for more accessible, accurate, and reliable data

DeKalb's Water System – First 100 Years Timeline...



6/7/2024



Scott
Candler, Sr.

Scott Candler's "Folly"

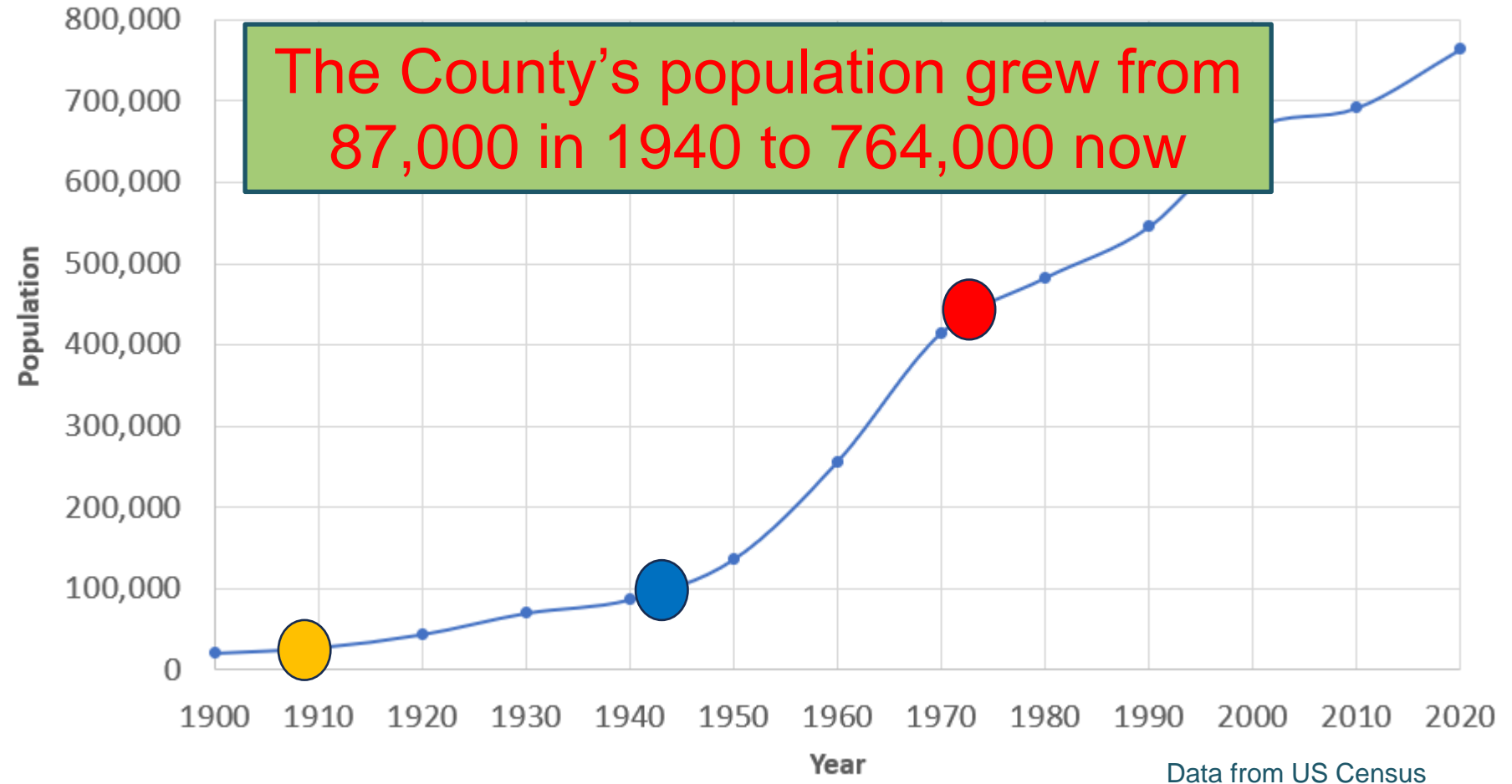


The Scott Candler Water Treatment Plant

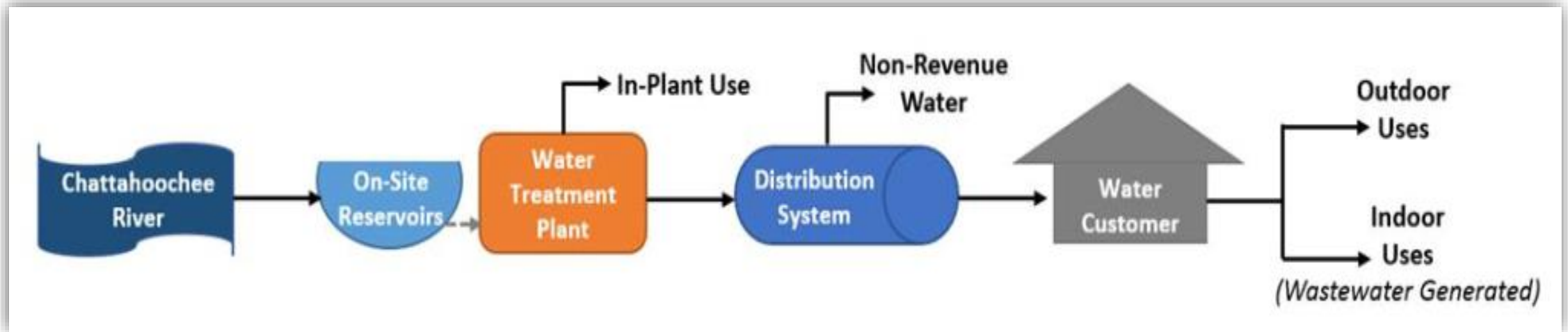
The beginning ...

- First pipes installed
- Water Treatment Plant and Department established
- Last major water main added

DeKalb County Population Growth by Year

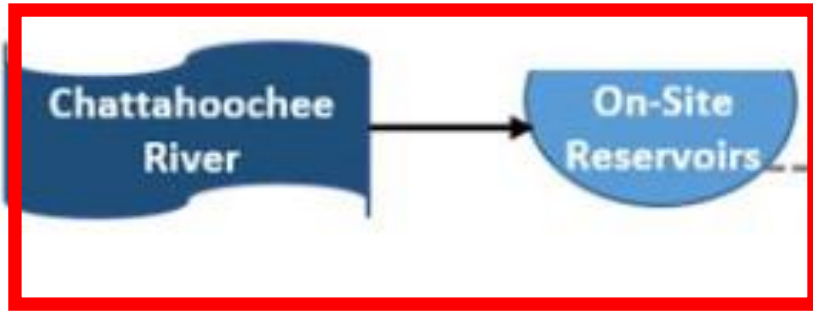


Water System Schematic



Raw Water System Overview

Figure 5: Water System Schematic



Scott Candler WTP Overview



Scott Candler WTP Electrical Building



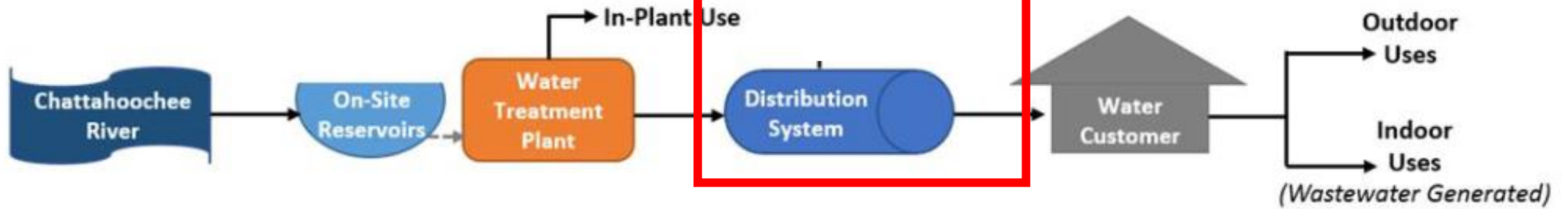
Transfer Pump #13 Starter Cabinet

Transfer Pumps not Replaced in 2007



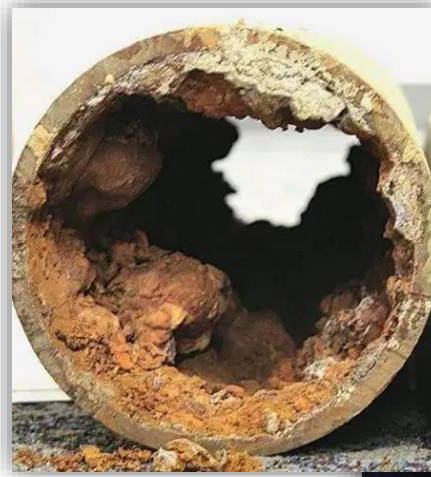
1989 transfer pumps

Water Treatment Overview



Pipe Type Issues

- Undersized
- High Pressure
- Clogged
- Aged
- Catastrophic breaks



Aging Transmission Mains

Both the Buford Highway pipeline that failed in 2019 and the McLendon that failed in 2024 carry about 35% of the flow in the system.

Buford Highway – 2019
Ductile Iron



McLendon Road
42" diameter
Feb/April 2024
Prestressed Concrete



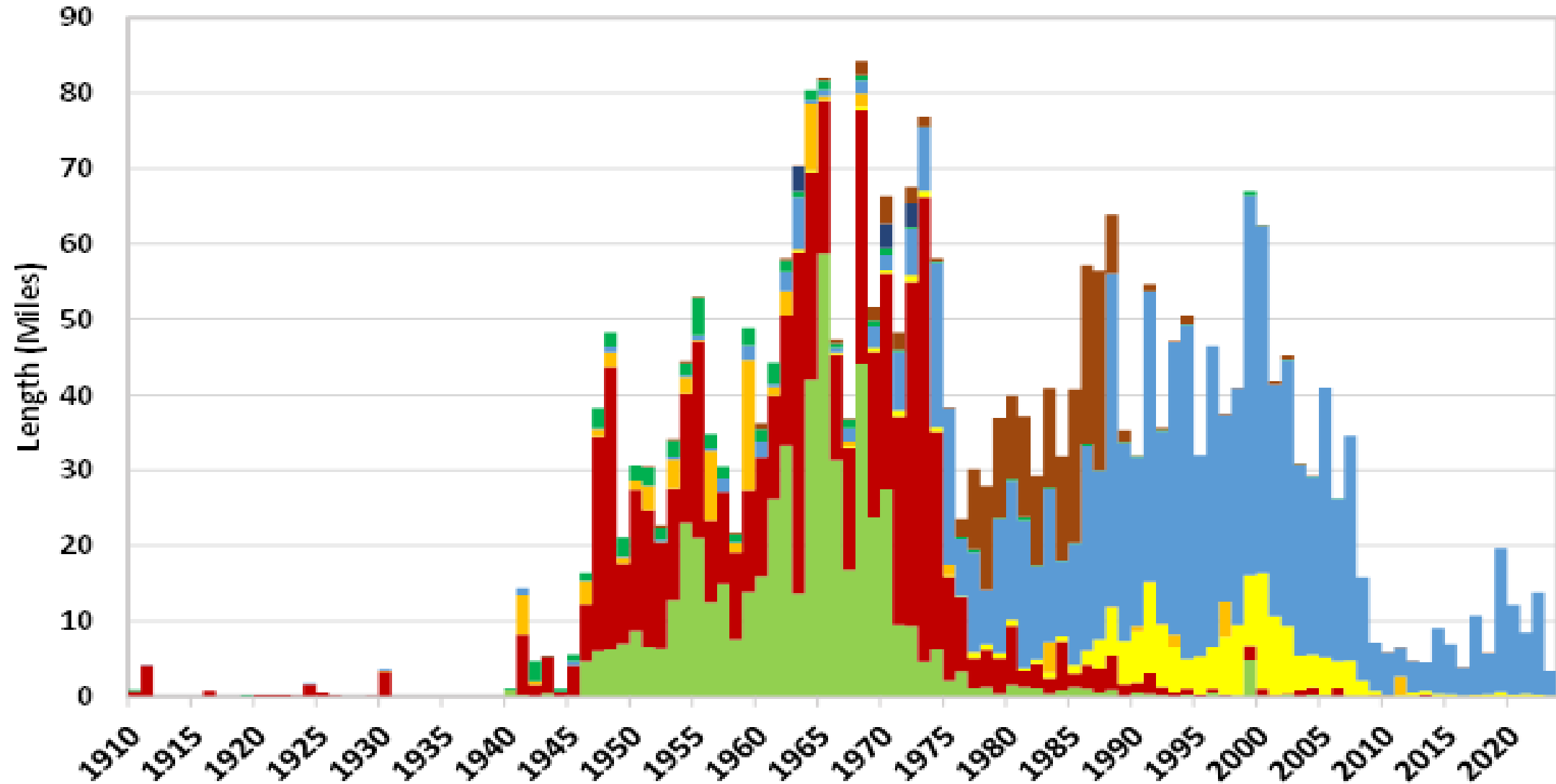
Celia Way
January 2023
Prestressed Concrete



AC and Aging Pipe Replacement

Length By Year of Installation

AC CI COP CS DI GA PCCP PVC



QUESTIONS?

